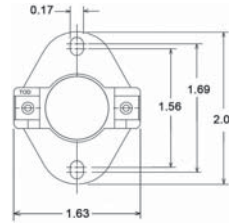


# TEMPERATURE LIMIT CONTROL SWITCHES

## LIMIT CONTROL SWITCHES – AUTO RESET



**Limit Control Switches – Auto Reset  
(Large Flanged Airstream – 60T)**

**THERMODISC**

PART NO	TOD SWITCH SERIES	OPEN TEMP (°F)	TOLERANCE OPEN TEMP (°F)	CLOSE TEMP (°F)	TOLERANCE CLOSE TEMP (°F)	NOM TEMP DIFFERENCE	MAX VOLTAGE RATING (VAC)	MAX CURRENT RATING (A)	COLOR CODE	DISC FACE	SWITCH TYPE	CONTACT ORIENT	MOUNTING INSERTION DEPTH-MAX (IN)
47-41569-01	60T	55	+/-5	65	+/-5	10	230	25	—	Enclosed	SPST	Normally Open	3/8
47-42244-01	60T	60	+/-6	70	+/-6	10	230	25	—	Enclosed	SPST	Normally Open	3/8
47-17359-23	60T	80	+/-3	70	+/-5	10	230	25	Green	Enclosed	SPST	Normally Closed	3/8
47-19554-34	60T	90	+/-3	80	+/-5	10	230	25	Red	Enclosed	SPST	Normally Closed	3/8
47-17359-21	60T	95	+/-3	85	+/-5	10	230	25	Green	Enclosed	SPST	Normally Closed	3/8
47-19554-37	60T	100	+/-5	125	+/-5	25	230	25	Green	Enclosed	SPST	Normally Open	3/8
47-21663-10	60T	110	+/-5	90	+/-5	20	230	25	Green	Exposed	SPST	Normally Closed	3/8
47-19554-40	60T	110	+/-5	100	+/-5	10	230	25	White	Enclosed	SPST	Normally Closed	3/8
47-21663-13	60T	110	+/-5	100	+/-5	10	230	25	Green	Exposed	SPST	Normally Closed	3/8
47-19554-83	60T	110	+/-5	125	+/-5	15	230	25	Green	Enclosed	SPST	Normally Open	3/8
47-104465-01	60T	115	+/-5	95	+/-5	20	230	25	Yellow	Enclosed	SPST	Normally Closed	25/32
47-25116-03	60T	115	+/-5	130	+/-5	15	230	25	—	Enclosed	SPST	Normally Open	3/8
47-19554-39	60T	120	+/-5	100	+/-5	20	230	25	White	Enclosed	SPST	Normally Closed	3/8
47-103895-02	60T	120	+/-5	100	+/-5	20	230	25	Tan	Enclosed	SPST	Normally Closed	3/8
47-104465-02	60T	120	+/-5	100	+/-5	20	230	25	Red	Enclosed	SPST	Normally Closed	25/32
47-21663-15	60T	120	+/-5	110	+/-5	10	230	25	Green	Exposed	SPST	Normally Closed	3/8
47-21663-16	60T	125	+/-5	115	+/-5	10	230	25	Green	Exposed	SPST	Normally Closed	3/8
47-104465-03	60T	125	+/-5	115	+/-5	10	230	25	Blue	Enclosed	SPST	Normally Closed	25/32
47-21663-07	60T	130	+/-5	100	+/-5	30	230	25	Green	Exposed	SPST	Normally Closed	3/8
47-21077-02	60T	130	+/-5	100	+/-6	30	230	25	Red	Enclosed	SPST	Normally Closed	25/32
PD476609	60T	130	+/-5	110	+/-5	20	230	25	—	Enclosed	SPST	Normally Closed	3/8
PD425123	60T	135	+/-5	90	+/-7	45	230	25	—	Exposed	SPST	Normally Closed	3/8
47-19554-85	60T	140	+/-5	100	+/-10	40	230	25	Red	Enclosed	SPST	Normally Closed	3/8
47-25117-01	60T	140	+/-5	100	+/-7	40	230	25	—	Enclosed	SPST	Normally Closed	3/8
47-25266-11	60T	140	+/-5	110	+/-9	30	230	25	—	Enclosed	SPST	Normally Closed	3/8
47-21663-04	60T	140	+/-5	110	+/-6	30	230	25	Green	Exposed	SPST	Normally Closed	3/8
47-25119-01	60T	140	+/-5	120	+/-5	20	230	25	—	Enclosed	SPDT	Normally Open/ Closed	3/8
47-23610-09	60T	140	+/-5	120	+/-5	20	230	25	Tan	Enclosed	SPST	Normally Closed	25/32
47-21663-01	60T	140	+/-5	130	+/-5	10	230	25	Green	Exposed	SPST	Normally Closed	3/8
47-17359-13	60T	140	+/-5	130	+/-5	10	230	25	Green	Enclosed	SPST	Normally Closed	3/8
470039	60T	145	+/-5	115	+/-6	30	230	25	—	Exposed	SPST	Normally Closed	3/8
470029	60T	150	+/-5	105	+/-7	45	230	25	—	Exposed	SPST	Normally Closed	3/8
PD476607	60T	150	+/-5	115	+/-6	35	230	25	—	Enclosed	SPST	Normally Closed	3/8
47-21663-09	60T	150	+/-5	120	+/-5	30	230	25	Green	Exposed	SPST	Normally Closed	3/8
47-25270-20	60T	155	+/-5	115	+/-7	40	230	25	—	Exposed	SPST	Normally Closed	3/8
470033	60T	160	+/-5	115	+/-7	45	230	25	—	Exposed	SPST	Normally Closed	3/8
47-19554-07	60T	160	+/-5	120	+/-8	40	230	25	Red	Enclosed	SPST	Normally Closed	3/8
47-19554-88	60T	160	+/-5	120	+/-8	40	230	25	Red	Enclosed	SPST	Normally Closed	3/8
47-25261-12	60T	160	+/-5	130	+/-9	30	230	25	—	Enclosed	SPST	Normally Closed	3/8
47-23610-17	60T	160	+/-5	140	+/-5	20	230	25	Blue/White	Enclosed	SPST	Normally Closed	25/32
47-25270-21	60T	165	+/-5	125	+/-7	40	230	25	—	Exposed	SPST	Normally Closed	3/8
47-23610-19	60T	165	+/-5	145	+/-5	20	230	25	Yellow/White	Enclosed	SPST	Normally Closed	25/32
470031	60T	170	+/-5	125	+/-7	45	230	25	—	Exposed	SPST	Normally Closed	3/8

(continued on next page)